



American Water Works
Association

Dedicated to the World's Most Important Resource®

AWWA WEBINAR

OCTOBER 21, 2020 | 11:00 A.M. – 12:30 P.M. MT

Watershed Protection and Military Installations

Copyright © 2020 American Water Works Association

1

WEBINAR MODERATOR



Jeff Lerner

Consultant

**U.S. Endowment for Forestry &
Communities**

Since 2015 Jeff has helped develop and manage the Healthy Watersheds Consortium Grant Program, focused on protecting watershed lands, as a consultant with the U.S. Endowment for Forestry and Communities and in conjunction with the EPA and USDA NRCS. He has over 25 years of experience with forest and other habitat conservation throughout the U.S. and holds degrees in Zoology, Conservation Biology and Sustainable Development.

2



2

2020 WEBINAR SPONSORS



ENHANCE YOUR WEBINAR EXPERIENCE

- Close
 - ✓ Email Programs
 - ✓ Instant messengers
 - ✓ Other programs not in use
- GoToWebinar Support
<https://support.logmeininc.com/gotowebinar?labelid=4a17cd95>



WEBINAR SURVEY

- Immediately upon closing the webinar
 - Survey window opens
 - Thank you!



5



5

PRODUCTS OR SERVICES DISCLAIMER

The mention of specific products or services in this webinar does not represent AWWA endorsement, nor do the opinions expressed in it necessarily reflect the views of AWWA

AWWA does not endorse or approve products or services

6



6

PANEL OF EXPERTS



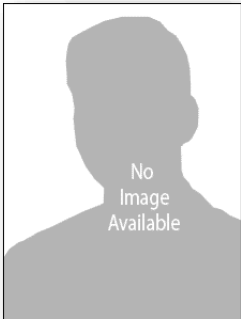
Kristin Thomasgard
Program Director,
Readiness and
Environmental Protection
Integration (REPI) Program
Office of the Assistant
Secretary of Defense



Shannon Wettstein
District Manager
Morrison Soil and Water
Conservation District



Susan Carr, PhD
O2O Program Manager
North Florida Land Trust



John Barrett
Land Program Director
Arizona Land and Water
Trust

7



7



American Water Works
Association
Dedicated to the World's Most Important Resource®



HEALTHY WATERSHEDS
CONSORTIUM GRANT
PROGRAM

A partnership to accelerate watershed protection

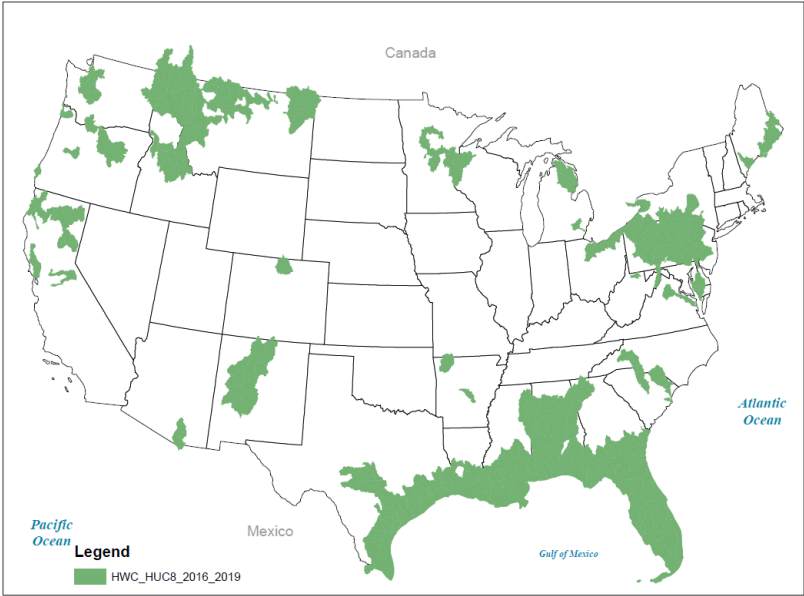


Copyright © 2019 American Water Works Association

8

HEALTHY WATERSHEDS CONSORTIUM GRANTS

- 2016 – 2019
- 56 awards
- \$10 million
- 450,000 acres
- 1,500 stream miles



9

LEARNING OBJECTIVES

1. Understand military installations and how they are involved with watershed protection.
2. Develop familiarity with federal and state programs that can provide resources for protecting watersheds and source water areas.
3. Learn ways that water utilities can work with military installations to advance their own goals for watershed protection.

“Military installations, water utilities, and other conservationists may ultimately want the same thing: a more protected watershed”

10

10

TODAY'S
AGENDA



- DOD Introduction
Kristin Thomasgard, Program Director REPI, Dept. of Defense
- Watershed Protection in the Camp Ripley Sentinel Landscape
Shannon Wettstein, District Manager, Morrison County SWCD
- Accelerating Watershed Protection in the O2O Corridor
Susan Carr, Program Manager, North Florida Land Trust
- Protecting Desert River Systems in SE AZ for Military Buffers & Water Supply
John Barrett, Director of Land Protection, Arizona Land and Water Trust

ASK THE EXPERTS



Jeff Lerner
U.S. Endowment for
Forestry &
Communities



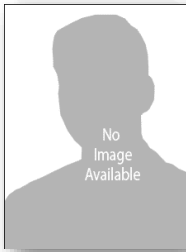
Kristin Thomasgard
Office of the Assistant
Secretary of Defense



Shannon Wettstein
Morrison Soil and
Water Conservation
District



Susan Carr, PhD
North Florida Land
Trust



John Barrett
Arizona Land and
Water Trust

Enter your **question** into the **question pane** on the right-hand side of the screen.

Please specify to whom you are addressing the question.



AN INTRODUCTION TO DOD'S CONSERVATION PARTNERSHIPS

Kristin Thomasgard
Program Director

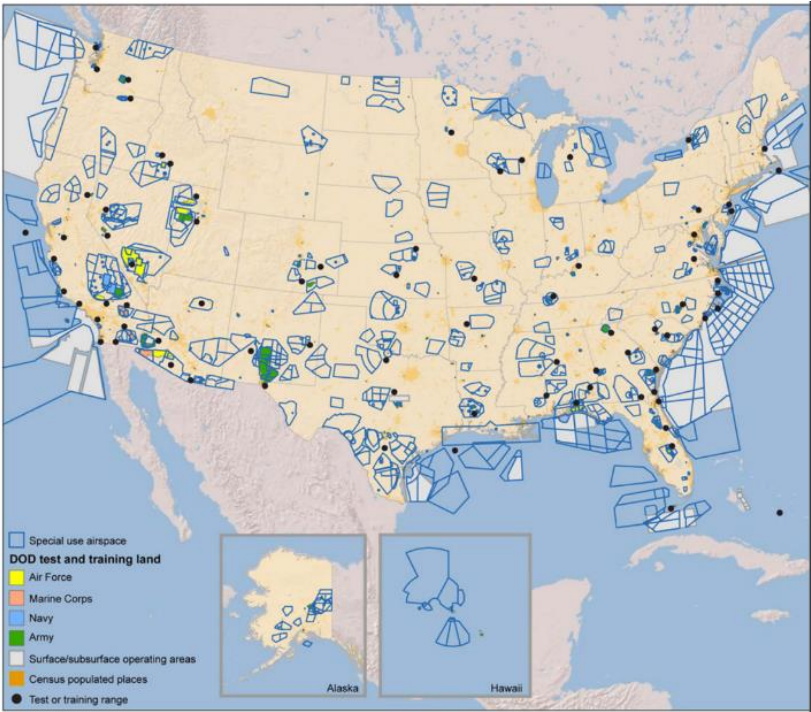
Readiness and Environmental Protection
Integration (REPI) Program
Department of Defense

13



13

THE MILITARY'S LAND, AIR AND SEA SPACE



14



14

IMPORTANCE
OF DOD TO
LAND
MANAGEMENT
AND
PROTECTION

27 **MILLION ACRES**
under DoD management

2X **THE SIZE** of all state
parks combined

1/2 **THE SIZE**
of all of America's national parks

1/2 **MILLION ACRES**
of conservation and farm lands
in the last decade the military
helped protect

**ALMOST
4X** **MORE
ENDANGERED
SPECIES**
per acre than any
other federal lands

75 **SPECIES** only found
on DoD lands

**MORE
THAN
80%** of America's ecological
systems supported

15



15

SIGNIFICANT
NATURAL
RESOURCE
PROGRAMS,
POLICIES AND
FUNDING

- DoD REPI Program is the 4th largest federal land protection program
- Through FY2019, \$962 million in DoD funds have been leveraged with \$854 million in partner funds



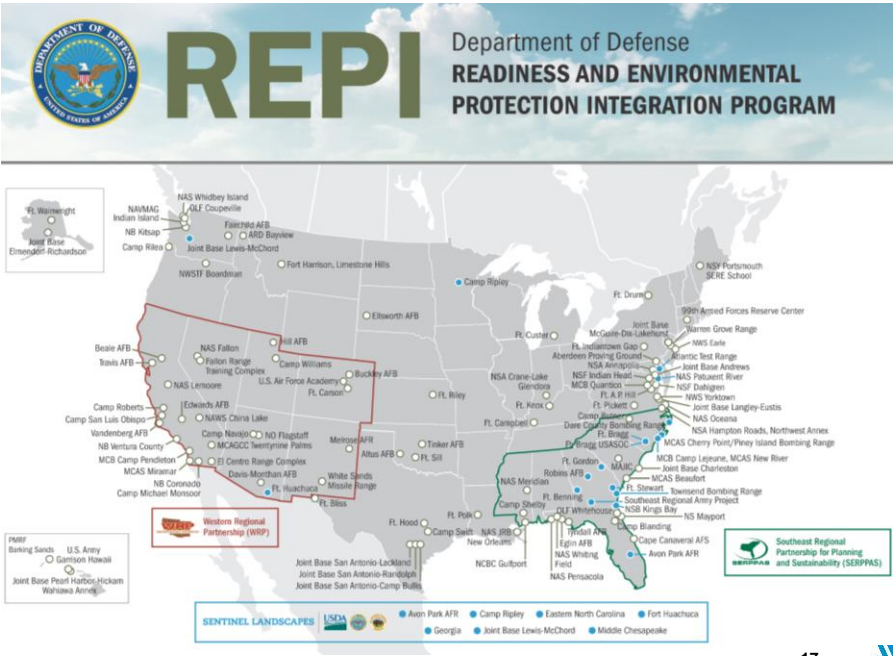
16



16

REPI
PROJECT
LOCATIONS
AND
LANDSCAPE
PARTNERSHIP
AREAS

- 109 projects in 33 states
- 7 Designated Sentinel Landscapes
- 2 Regional Partnerships



17



17

ASK THE EXPERTS



Jeff Lerner
U.S. Endowment for Forestry & Communities



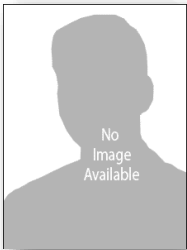
Kristin Thomasgard
Office of the Assistant Secretary of Defense



Shannon Wettstein
Morrison Soil and Water Conservation District



Susan Carr, PhD
North Florida Land Trust



John Barrett
Arizona Land and Water Trust

Enter your **question** into the **question pane** on the right-hand side of the screen.

Please specify to whom you are addressing the question.

18



18



CAMP RIPLEY SENTINEL LANDSCAPE

MINNESOTA

Shannon Wettstein
District Manager
Morrison Soil and Water Conservation District (SWCD)




19

INGREDIENTS AND STEPS TO CREATING A SENTINEL LANDSCAPE

- 1 C Shared **Goals**
- 4 C **Partners**
- 1 C Implementation **Money**

Mix to create the right consistency
Bake and Share Your Successes

<https://sentinellandscape.org/landscapes/camp-ripley/>



- Why is Camp Ripley interested in Watershed Protection?
- Why are our partners interested in Sentinel Landscape?
- How did we go about setting goals to protect drinking water?
- What will ensure our program is successful?

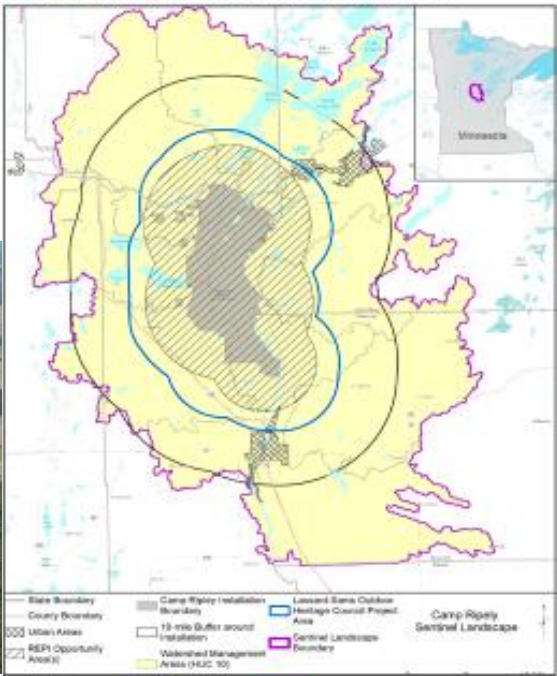
20



**PROTECTING THE
QUALITY OF WATER
ENTERING THE
MISSISSIPPI RIVER
FOR LOCAL
COMMUNITIES AND
DOWNSTREAM
CITIES**

- Private Properties in Size from 60-100 Acres
- Agricultural
- Forested
- Recreational

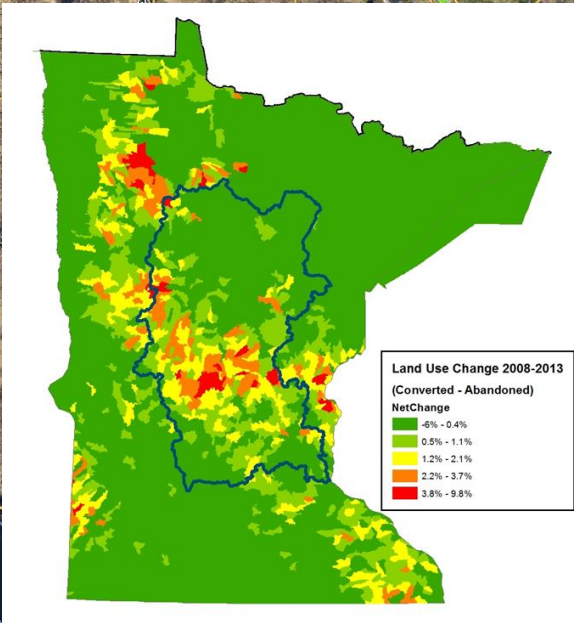
Figure 1: Camp Ripley Sentinel Landscape Map



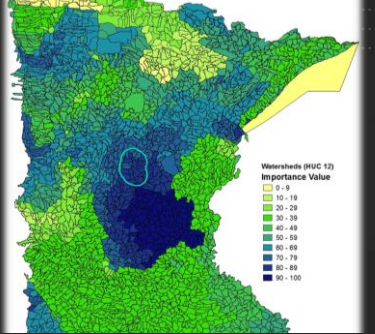


21

**WHY IS CAMP
RIPLEY IS
INTERESTED
IN
WATERSHED
PROTECTION**

By allowing incompatible development nearby, such training can be impeded, bringing complaints about the noise, odors and smoke from machinery and weapons



22



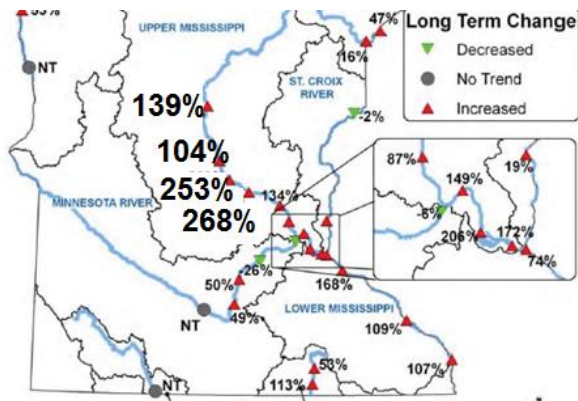
WHY OUR PARTNERS ARE INTERESTED IN SENTINEL LANDSCAPES

23

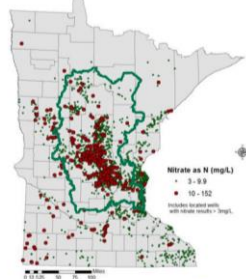
SHARED STRATEGIES TO ACHIEVE FUTURE CONDITIONS

- Protect and enhance high quality natural resources
- Protect working lands
- Increase coordination
- Restore and improve habitat and water resources

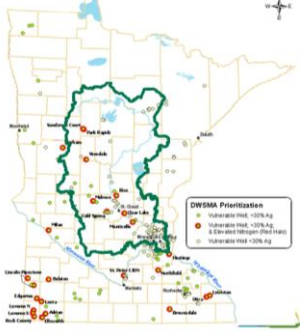
23



Private wells



Public Water Supplies



ENHANCEMENT GOAL: PROTECT AND ENHANCE HEALTHY WATER AND FOREST ECOSYSTEMS

Specifically – Nitrate Contamination

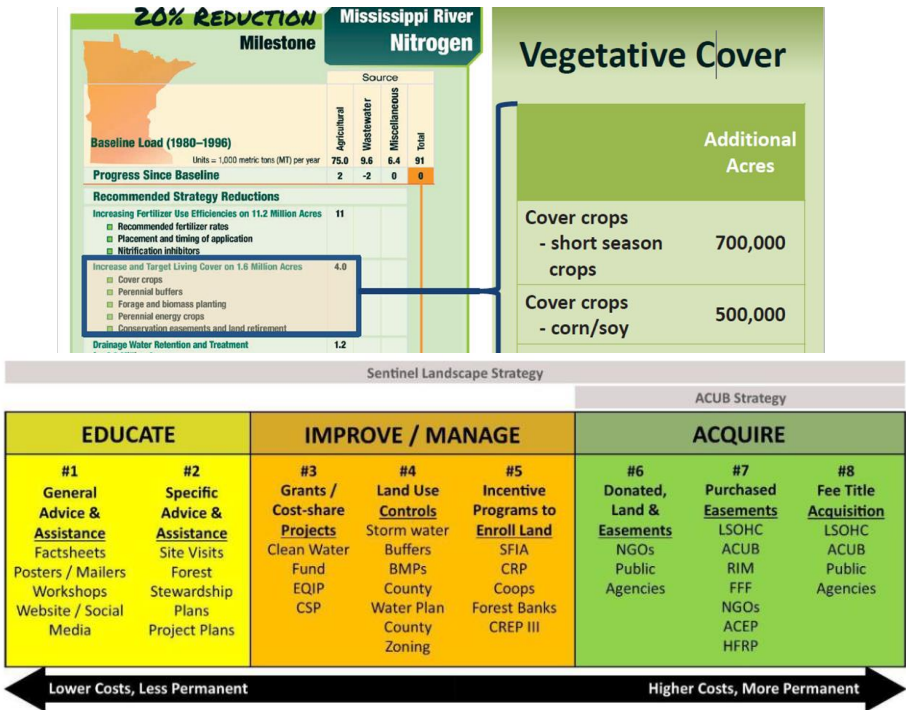
- Nitrate Trends
- Private Wells
- Public Water Supplies

24



HOW TO ADDRESS WATER QUALITY ISSUES

- Prioritizing Goals
- Targeting Best Management Practices
- Measuring Impacts



25

ENSURING SUCCESS

- Leverage
- Partner Contributions
- Memorandums of Agreement
- Celebrating and Sharing Success

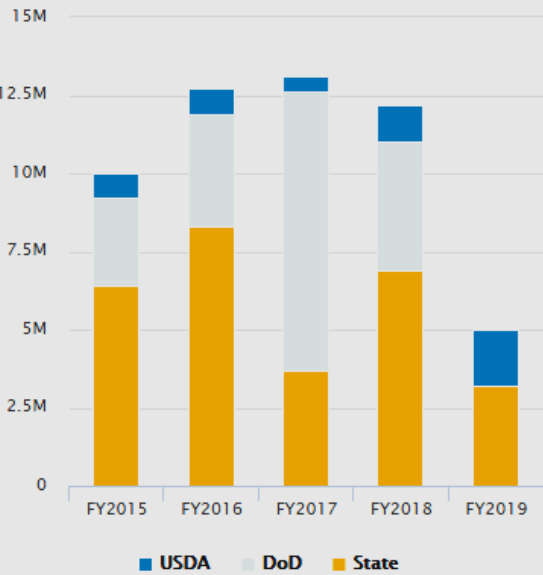
Program Status

Leveraged Federal Funding To Date: \$42,480,400

LSOHC Funding To Date: \$14,962,000

- 300+ easements completed
- 31,500+ easement acres
- 2,270+ fee title acquisition acres
- 300+ landowner donated acres
- 200+ interested landowners

Total Funding by Partner



26



INGREDIENTS AND STEPS TO CREATING A SENTINEL LANDSCAPE

- 1 C Shared Goals
- 4 C Partners
- 1 C Implementation Money

Mix to create the right consistency
Bake and Share Your Successes

<https://sentinellandscapes.org/landscapes/camp-ripley/>

27

ASK THE EXPERTS



Jeff Lerner
U.S. Endowment for Forestry & Communities



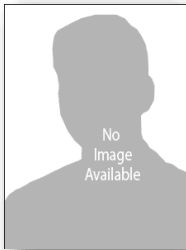
Kristin Thomasgard
Office of the Assistant Secretary of Defense



Shannon Wettstein
Morrison Soil and Water Conservation District



Susan Carr, PhD
North Florida Land Trust



John Barrett
Arizona Land and Water Trust



Enter your **question** into the **question pane** on the right-hand side of the screen.

Please specify to whom you are addressing the question.

28

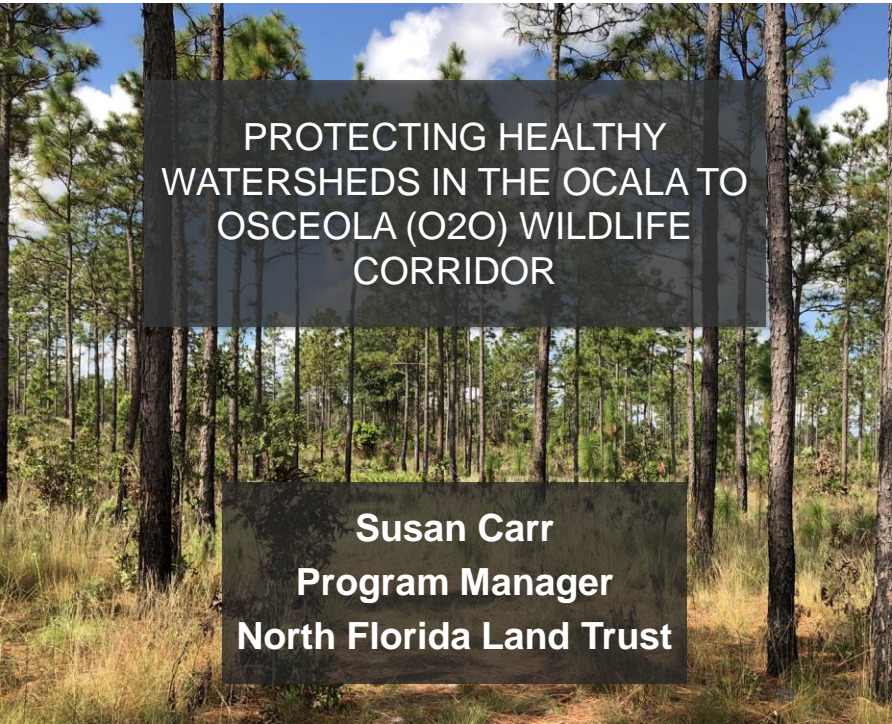
28



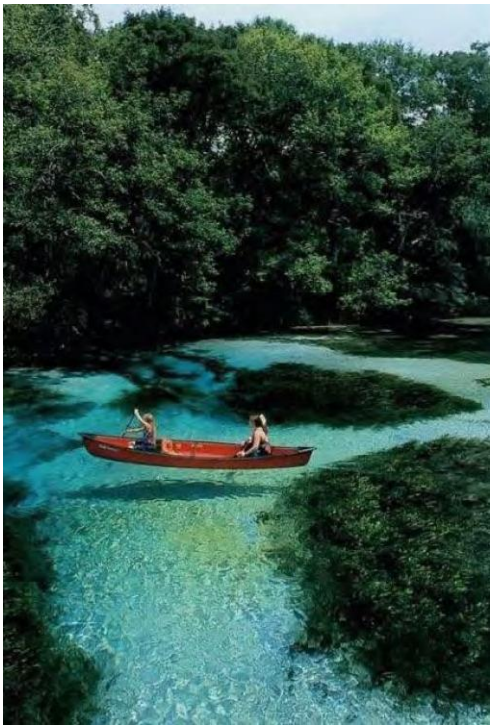


PROTECTING HEALTHY
WATERSHEDS IN THE OCALA TO
OSCEOLA (O2O) WILDLIFE
CORRIDOR

Susan Carr
Program Manager
North Florida Land Trust



29



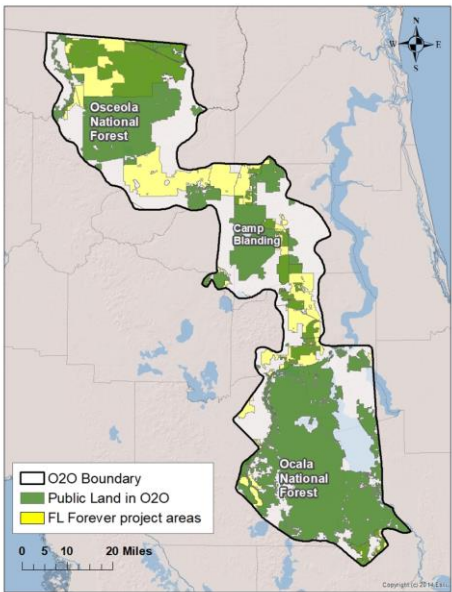
30



INTRODUCTION: THE O2O CONSERVATION INITIATIVE

- Military readiness and watershed protection in North Florida: A public-private Partnership model
- A Military buffer program as basis for other State and Federal conservation programs
- How water utilities can work with Partnerships and military installations to protect watersheds

THE OCALA TO OSCEOLA (O2O) WILDLIFE CORRIDOR



- Network of Public and Private lands anchored by two National Forests
- 1.6 Million Acres: about ½ privately owned
- Rural and Natural Lands
- Camp Blanding Joint Training Center (Army National Guard)
- Florida Forever project areas

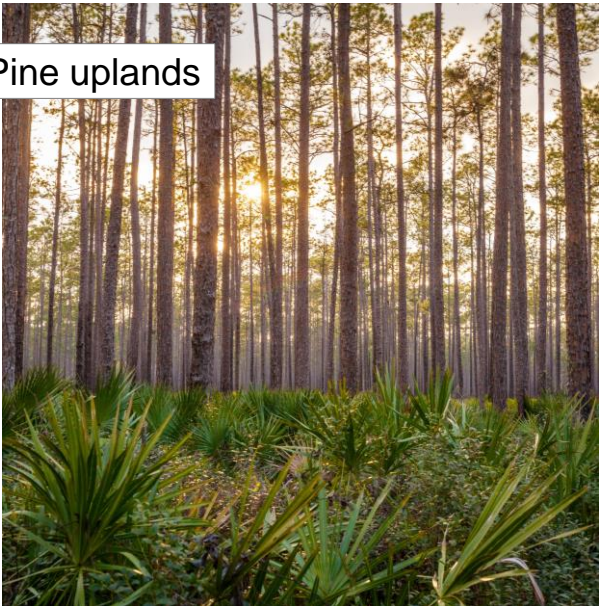
31



31



The O2O: Pine uplands



32

32



The O2O: Wetlands



33

33



THE O2O WILDLIFE CORRIDOR

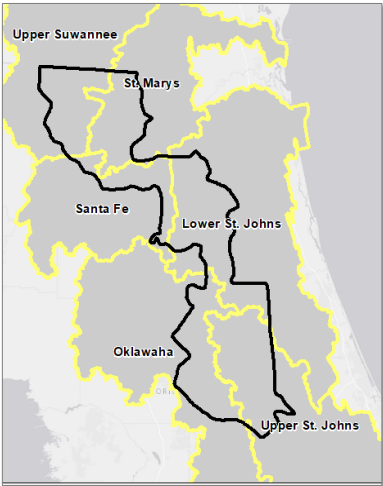
- Part of the Florida Wildlife Corridor
- Florida Ecological Greenways Network

34

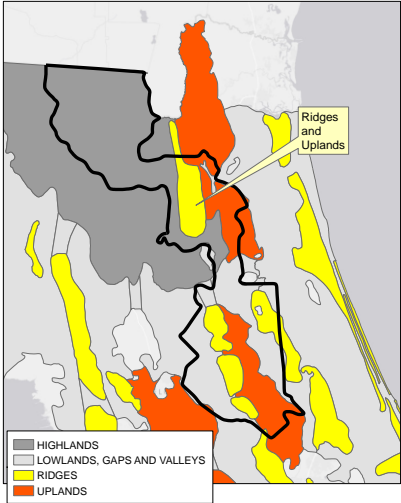


34

O2O: SPANS SIX WATERSHEDS



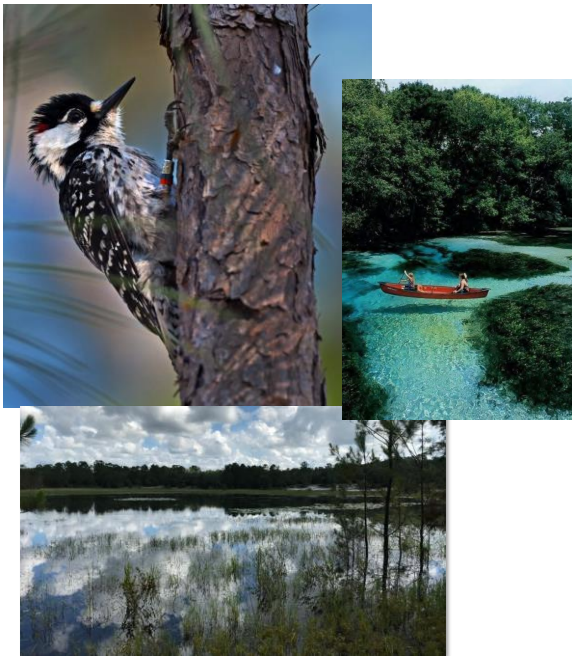
Major HUC 8 Watersheds



Physiographic provinces North FL



35



O2O Wildlife Corridor Vision:

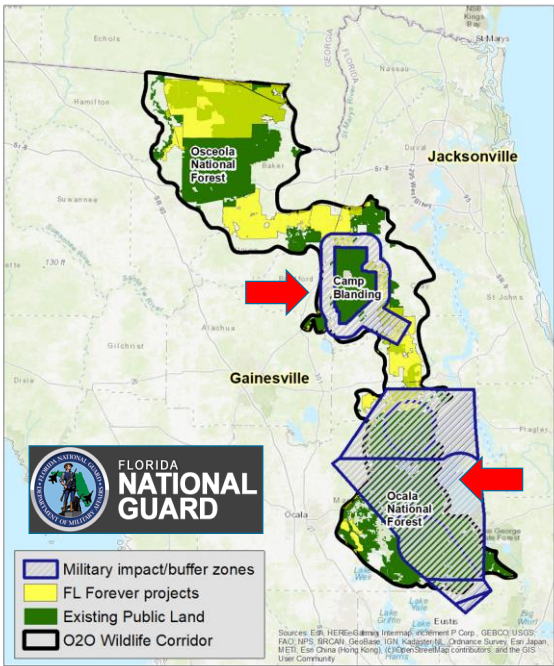
1. Natural landscapes, connector lands

- Habitat: Wildlife, imperiled species
- Working Forests
- Watershed Protection



36

36



O2O Wildlife Corridor Vision:

2. Landscape compatible for Military Readiness

- Camp Blanding (National Guard)
- U.S. Navy Bombing Ranges

37

O2O CONSERVATION INITIATIVE

1. Land Protection: Purchase, conservation easements

- GOAL: 140,000 acres by 2040

2. Land Management: Conservation on public and private lands

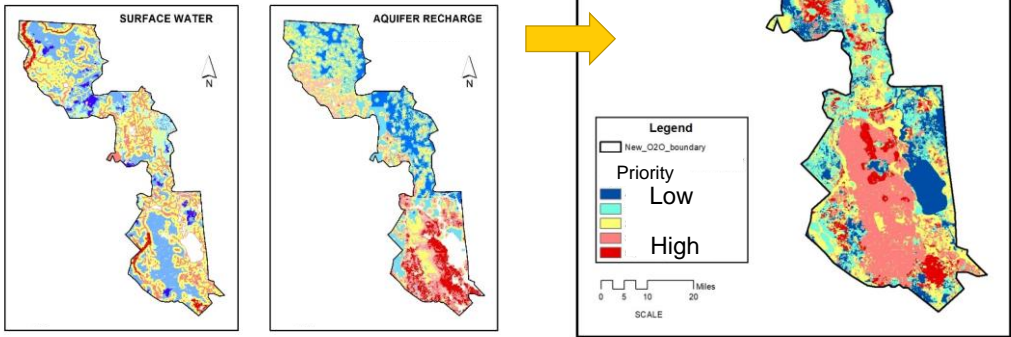
- GOAL: Habitat, Water, Working Forests



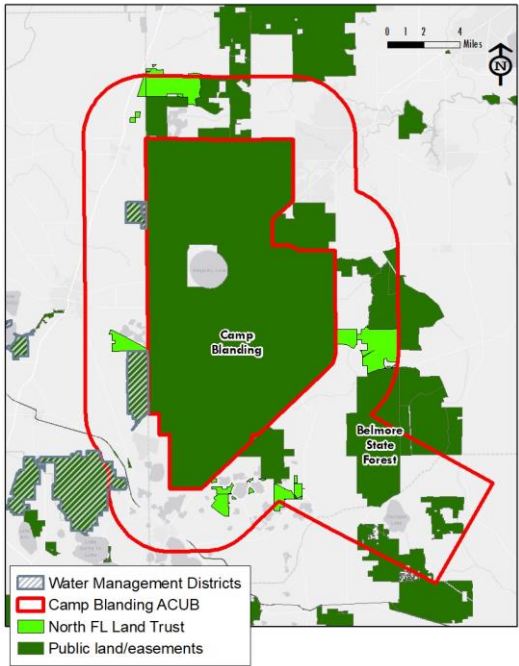
38

Strategic Land Protection: Priority Acres

- 1. Conservation strategy based on landscape priorities (GIS model)
- 2. Overall model includes water resources
- 3. Priority model from Partner inputs (Water districts)



39



Camp Blanding: Army Compatible Use Buffer (ACUB) Program

- State Water Management Districts early partners
- North Florida Land Trust: has cooperative agreement
- Over 7,000 ACUB acres protected since 2017

40

40



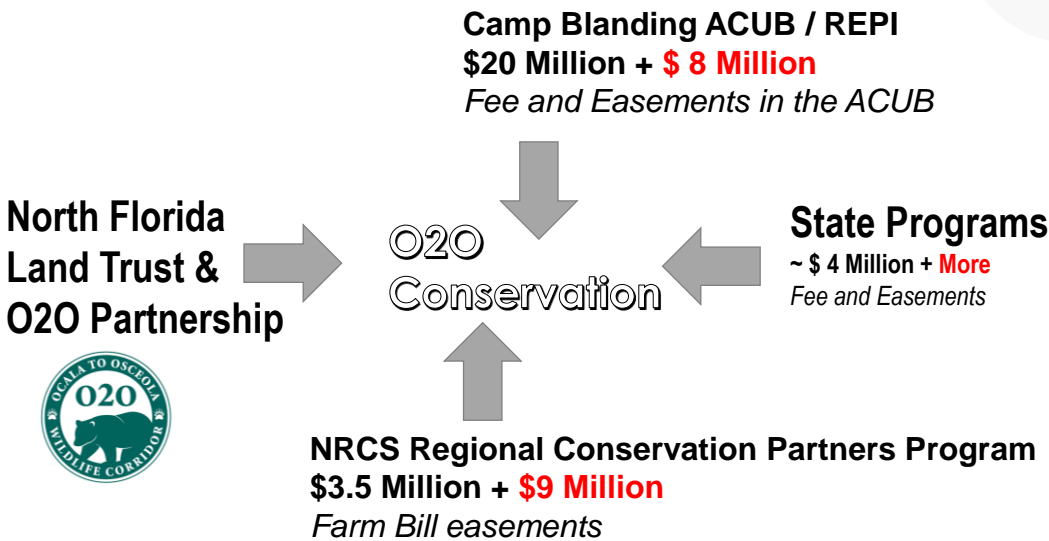
What are the interests of Camp Blanding and U.S. Navy?

- *Deter incompatible land use around installations (buffer)*
- *Avoid regulatory restriction (listed species)*
- *Watershed protection: source water for installation and surrounding landscape*

41

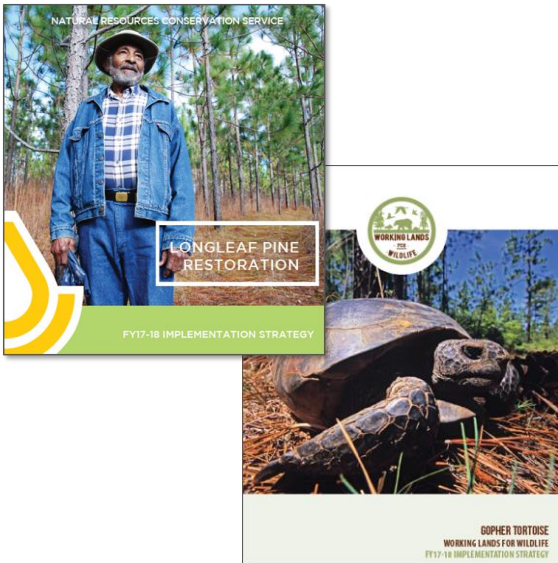
41

FOUNDATION OF THE BIGGER O2O PARTNERSHIP



42

Natural Resources Conservation Service
Regional Conservation Partnership Program (RCPP)

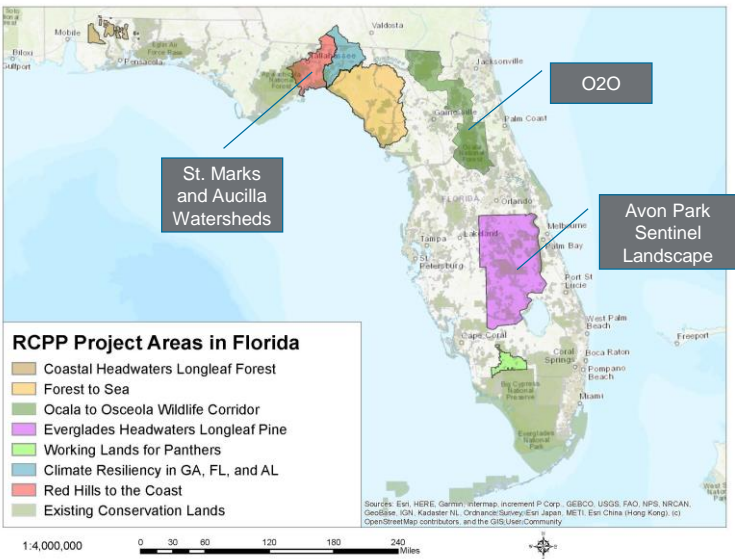


- Leverages Partnership programs
- Flexible “match” requirements
- Funding for easements and conservation management
- Allows Partners to guide Farm Bill programs
- Centered on landscape resource concerns: WATER



43

REGIONAL CONSERVATION PARTNERSHIP PROGRAM (RCPP) IN FLORIDA



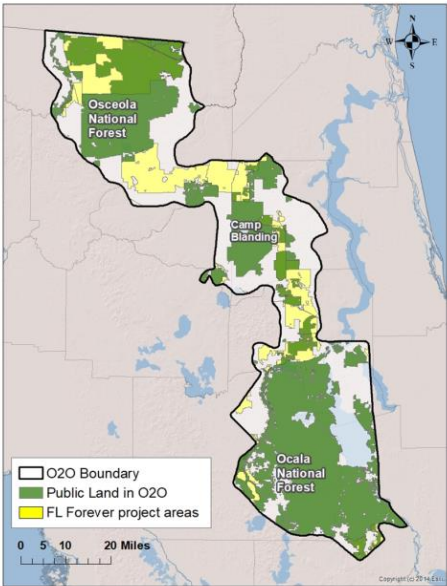
- Landscape centered
- Wildlife habitat, Watersheds, Sentinel landscapes
- Requires outcomes assessment: Water resources
- Utilities can partner

44



44

STATE CONSERVATION PROGRAMS: FLORIDA FOREVER



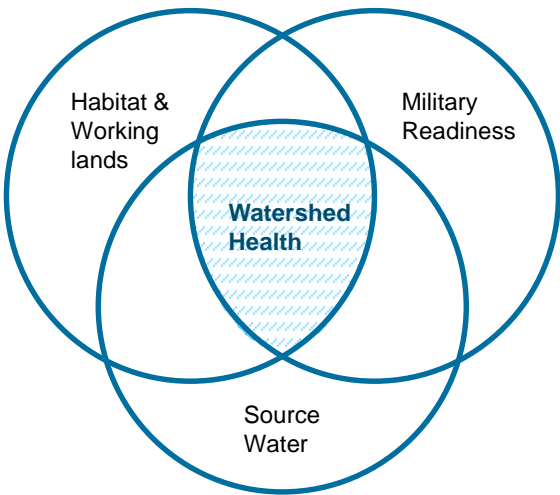
- Landscape scale program areas
- Land acquisitions evaluated: watershed benefits
- Florida Water Management Districts involved
- About 5,000 acres new O2O conservation land since 2017

45

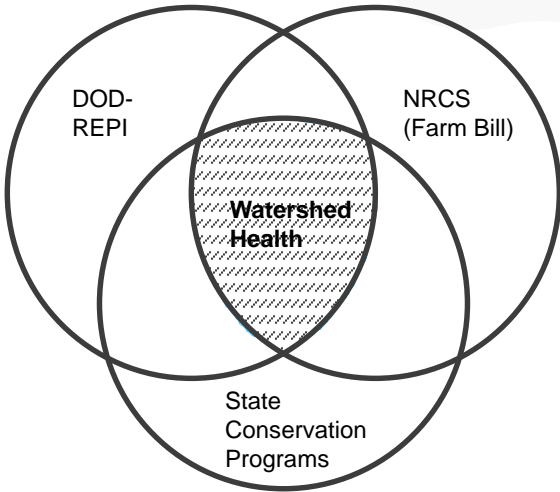


45

OVERLAPPING PROGRAMS AND MISSIONS:
WATERSHED HEALTH



PROGRAMS

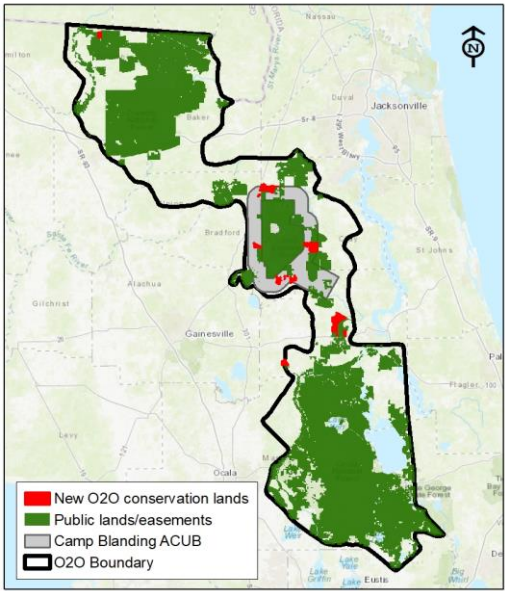


MISSIONS

46



46



13,000 acres new conservation lands since 2017

HOW DOES LAND PROTECTION AFFECT WATERSHED HEALTH?

- Deter incompatible land use: Water consumption & pollution
- Strategic land protection watershed health
- Protect working forest lands



47

HOW DOES LAND MANAGEMENT HELP WATERSHED HEALTH?

Land Management: Forest Management for wildlife habitat, good for water quantity and quality



48

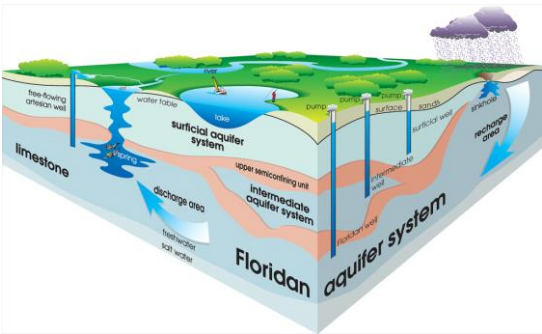


48

SPECIES HABITAT MANAGEMENT: GOOD FOR
SOURCE WATER



Gopher Tortoise habitat



Aquifer Recharge



ADVICE

Utilities can quantify and manage watershed land protection as an asset

Need tools and partners

Talk with your local land trust – Can they quantify water assets related to land protection in your watershed?

Florida Example: Protect one acre – increase water supply to aquifer by nearly 400 gallons/day

Florida Example: Restore farm to native forest, reduce nutrient runoff. Cost to buy and convert land much less than water treatment costs



SUMMARY



Susan Carr
North Florida Land Trust
scarr@NFLT.org



- Sentinel Landscape/REPI/ACUB as basis for successful Partnerships
- Power of the public-private Partnership
- Quantify watershed health benefits: Assets

51



51

ASK THE EXPERTS



Jeff Lerner
U.S. Endowment for Forestry & Communities



Kristin Thomasgard
Office of the Assistant Secretary of Defense



Shannon Wettstein
Morrison Soil and Water Conservation District



Susan Carr, PhD
North Florida Land Trust



John Barrett
Arizona Land and Water Trust

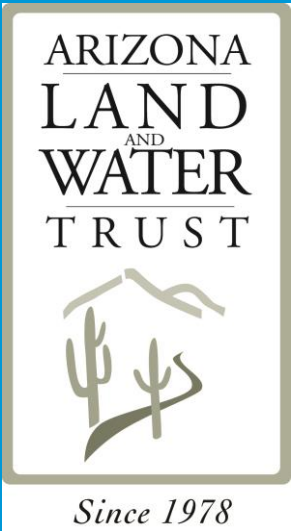
Enter your **question** into the **question pane** on the right-hand side of the screen.

Please specify to whom you are addressing the question.

52



52



FORT HUACHUCA & REGIONAL WATER CONSERVATION

John Barrett
Land Program Director
Arizona Land and Water Trust

53



53

ARIZONA LAND AND WATER TRUST



- Non-profit land trust
- Work directly with private landowners interested in permanent conservation of their property, usually rangeland or ecologically significant land
- Conservation easements
- Use Federal, state and private/foundation resources

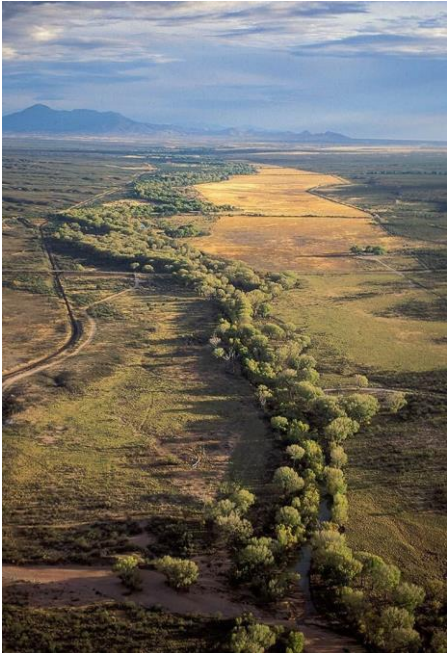
54



54

OVERVIEW

1. Fort Huachuca and the natural landscape
2. Threats and challenges
3. Adapting to higher temperatures, sustained drought, and human pressure on water supplies.

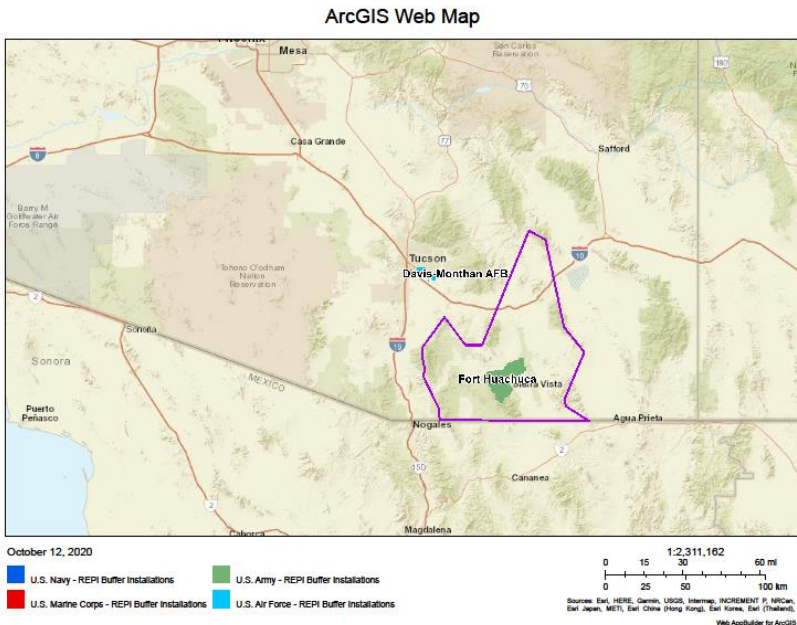


55



55

**FORT
HUACHUCA
&
FORT
HUACHUCA
SENTINEL
LANDSCAPE**



56



56



57

ARIZONA
RIVER
SYSTEMS



58

58

SAN PEDRO RIVER

- Free flowing
- Ephemeral
- Critical riparian area
- Used by 250 species of migratory birds



59



59

SANTA CRUZ RIVER

- Effluent dependent
- Culturally significant
- Headwaters inside Fort Huachuca Sentinel Landscape



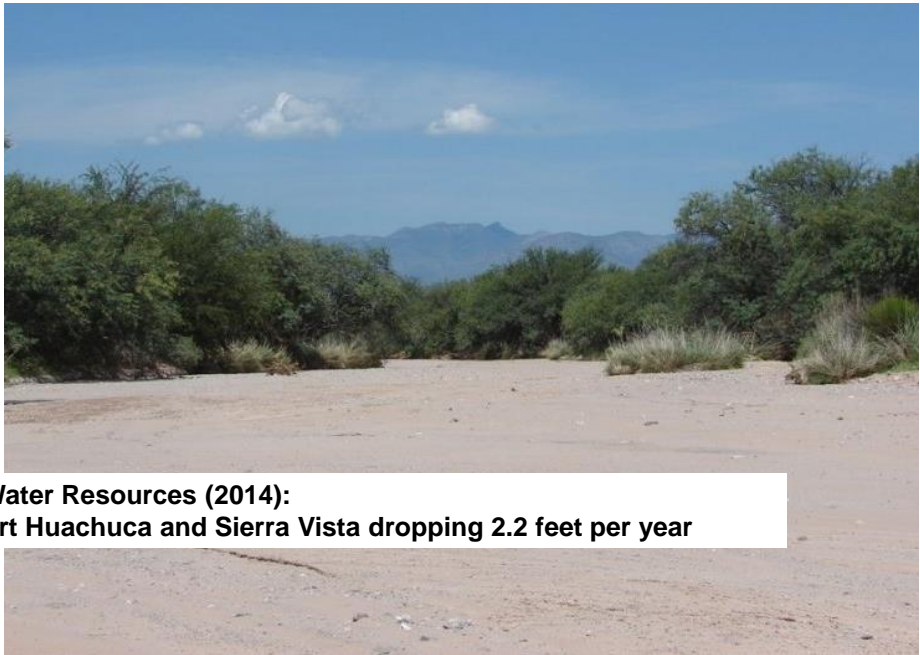
60



60

THREATS

- CLIMATE
(especially heat and drought)
- PUMPING
(withdrawal exceed recharge)



**Arizona Department of Water Resources (2014):
Aquifer under Fort Huachuca and Sierra Vista dropping 2.2 feet per year**

61



61

RESPONSE

- Land protection
- Conservation easements
- Land use / Groundwater connection
- Private property



62



62



63



63

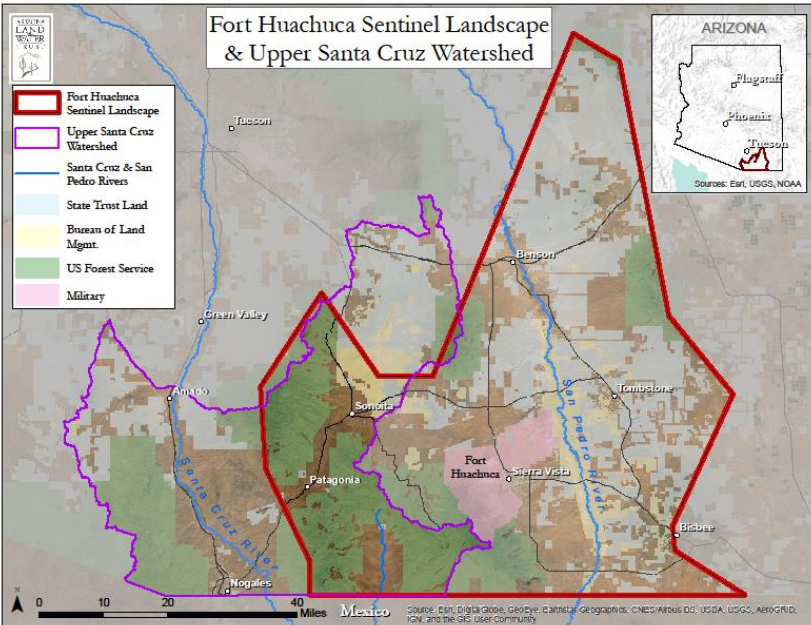


64

CONSERVATION
EASEMENTS

&

HEALTHY
WATERSHEDS
CONSORTIUM
GRANT



65



RESPONSE

&

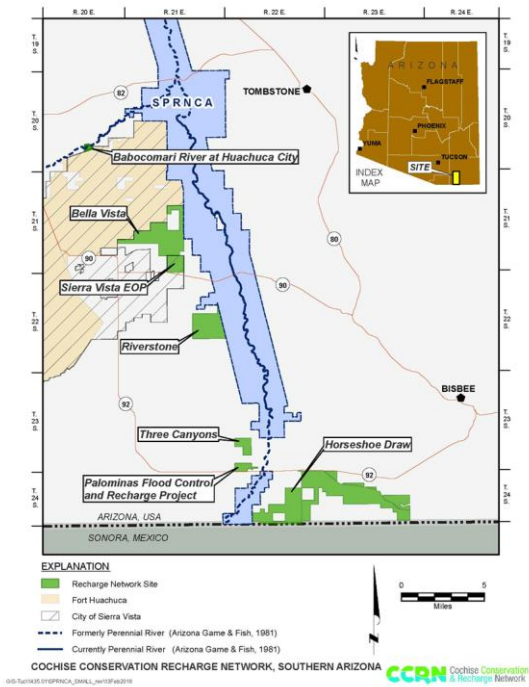
COCHISE
CONSERVATION
RECHARGE
NETWORK

1. 6,344 acres of land where recharge/replenishment can most benefit river flows (both surface and subsurface)
2. Wide range of partners—county, municipalities, non-profits, local NRCDs
3. Wide range of projects—stormwater runoff recharge basins, grassland restoration, effluent settling ponds, land protection
4. Annually, conserve ~3,000 acres-feet of groundwater and facilitate ~3,000 acre-feet of stormwater and effluent recharge
5. Land acquisitions funded through Army Compatible Use Buffer Program

66



RESPONSE
&
COCHISE
CONSERVATION
RECHARGE
NETWORK



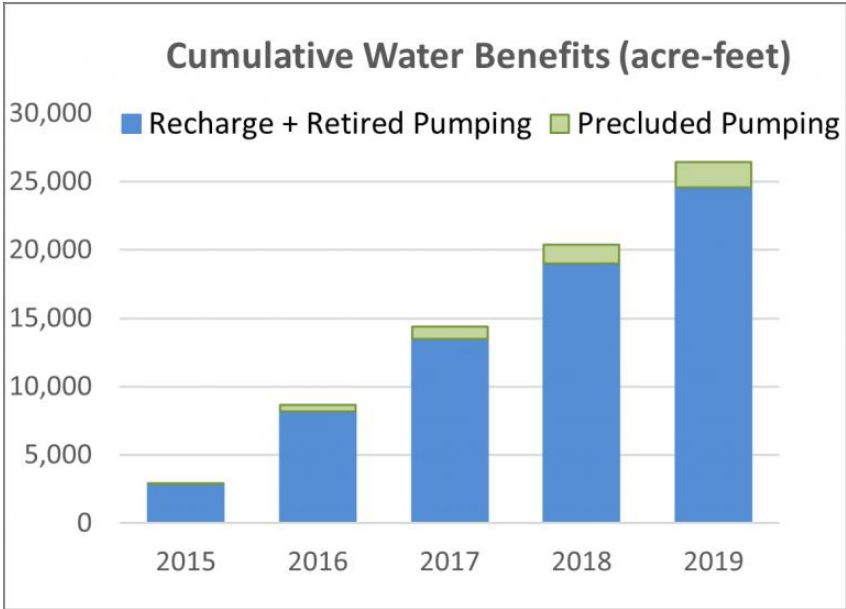


69



69

RESPONSE
&
COCHISE
CONSERVATION
RECHARGE
NETWORK



70



70

FUTURE

- 1. Department of Defense is taking a lead role in planning for resilience, interested in working with communities around installations.
- 2. Understanding that collaboration is essential to long-term protection of desert rivers.
- 3. Traditional jurisdictional boundaries between Federal agencies eroding in Sentinel Landscapes.

71



71

ASK THE EXPERTS



Jeff Lerner
U.S. Endowment for Forestry & Communities



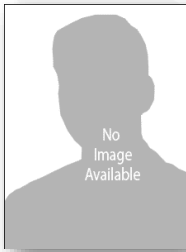
Kristin Thomasgard
Office of the Assistant Secretary of Defense



Shannon Wettstein
Morrison Soil and Water Conservation District



Susan Carr, PhD
North Florida Land Trust



John Barrett
Arizona Land and Water Trust

Enter your **question** into the **question pane** on the right-hand side of the screen.

Please specify to whom you are addressing the question.

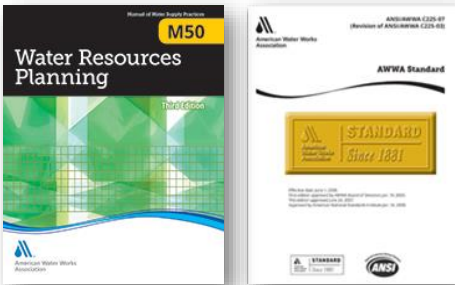
72



72

ADDITIONAL RESOURCES

- [AWWA Source Water Protection Resource Community](#)
- [AWWA Water Conservation Resource Community](#)
- [M50 Water Resources Planning](#)
 - AWWA catalog no: 30050-3E
- [AWWA G300-14 Source Water Protection](#)
 - AWWA catalog no: 47300-2014
- [NRCS Source Water Document](#)
- [Healthy Watersheds Consortium Grant Overview](#)
- [REPI Fact Sheet](#)
- [Sentinel Accomplishments](#)



UPCOMING WEBINARS

- Oct 22 - FREE Webinar from Napoli Shkolnik: A Cost Recovery Program: PFAS Water Contamination
- Oct 28 - A Closer Look at New and Not so New CEC's: PFAS, Microplastics and Solvents
- Oct 29 - Managing Cyber Risk in the Water Sector: Threats, Responsibility and Solutions

[Register for a 2020 Webinar Bundle](#)

View the full 2020 schedule at awwa.org/webinars



THANK YOU FOR JOINING TODAY'S WEBINAR

- As part of your registration, you are entitled to an additional 30-day archive access of today's program.
- Until next time, keep the water safe and secure.



PRESENTER BIOGRAPHY INFORMATION

Since 2013, Kristin Thomasgard has served as Program Director for the Department of Defense Readiness and Environmental Protection Integration (REPI) Program, which links communities, land preservation, and national defense. The REPI program protects the military's mission by preventing, removing, and mitigating restrictions to military activities through partnerships with state and local governments, land conservation organizations and other key stakeholders. To-date, REPI partnerships have conserved over 688,000 acres of land at 110 installations in 33 states. Ms. Thomasgard also serves as the federal chair for the Sentinel Landscapes Partnership, a collaborative effort between the U.S. Departments of Agriculture, Defense, and the Interior.

Shannon Wettstein is the district manager for the Morrison Soil and Water Conservation District in Minnesota. She and her team work with the Camp Ripley Sentinel Landscape program to protect 75,000 acres of rural buffer lands to maintain military training capabilities while conserving one of the most ecologically rich environments and important source water areas in the Midwest.

Susan is a Program Manager with the North Florida Land Trust, a nonprofit conservation organization dedicated to land conservation. She works to permanently protect a large landscape known as the Ocala to Osceola Wildlife Corridor, which is part the larger Florida Wildlife Corridor. Susan's earlier professional career included positions with the USDA Forest Service and Natural Resources Conservation Service, and several nonprofit conservation organizations. She earned a B.S. in Botany from the University of Florida and a M.S. in Plant Biology from Louisiana State University. Susan eventually returned to her undergrad alma mater to complete her PhD in Wildlife Ecology and Conservation. Her graduate research focused on floristic diversity of fire-maintained pinelands across Florida, and fostered a deep appreciation for Florida's natural landscapes.

John Barrett is the director of land protection for the Arizona Land and Water Trust. He and his team work with partners in the Fort Huachuca area of southern Arizona to buffer the base from encroachment while also supporting projects that will protect riparian areas, groundwater supplies, and streamflow, conserving up to 56,000 additional acres.



CE CREDITS (CEUS) AND PROFESSIONAL DEVELOPMENT HOURS (PDHS)

AWWA awards webinar attendees CEUs.

If you viewed this webinar live, you will receive a certificate through the AWWA account associated with the email address you used to register.

If you viewed this webinar through a group registration, contact your proctor to log your participation.

If you viewed this as an archive webinar, follow the directions included in your archive webinar email to log your participation.

Certificates will be available on your AWWA account within 30 days of the webinar

77



77

HOW TO PRINT YOUR CERTIFICATE OF COMPLETION

Within 30 days of the webinar, login to **www.awwa.org** or register on the website. If you are having problems, please email educationservices@awwa.org

Once logged in, go to:

- My Account (click on your name in the top right corner)
- My Transcripts
 - To print your official transcript, click **Print list**
 - To print individual certificates, click **Download Certificate**

78



78

2020 WEBINAR SPONSORS

